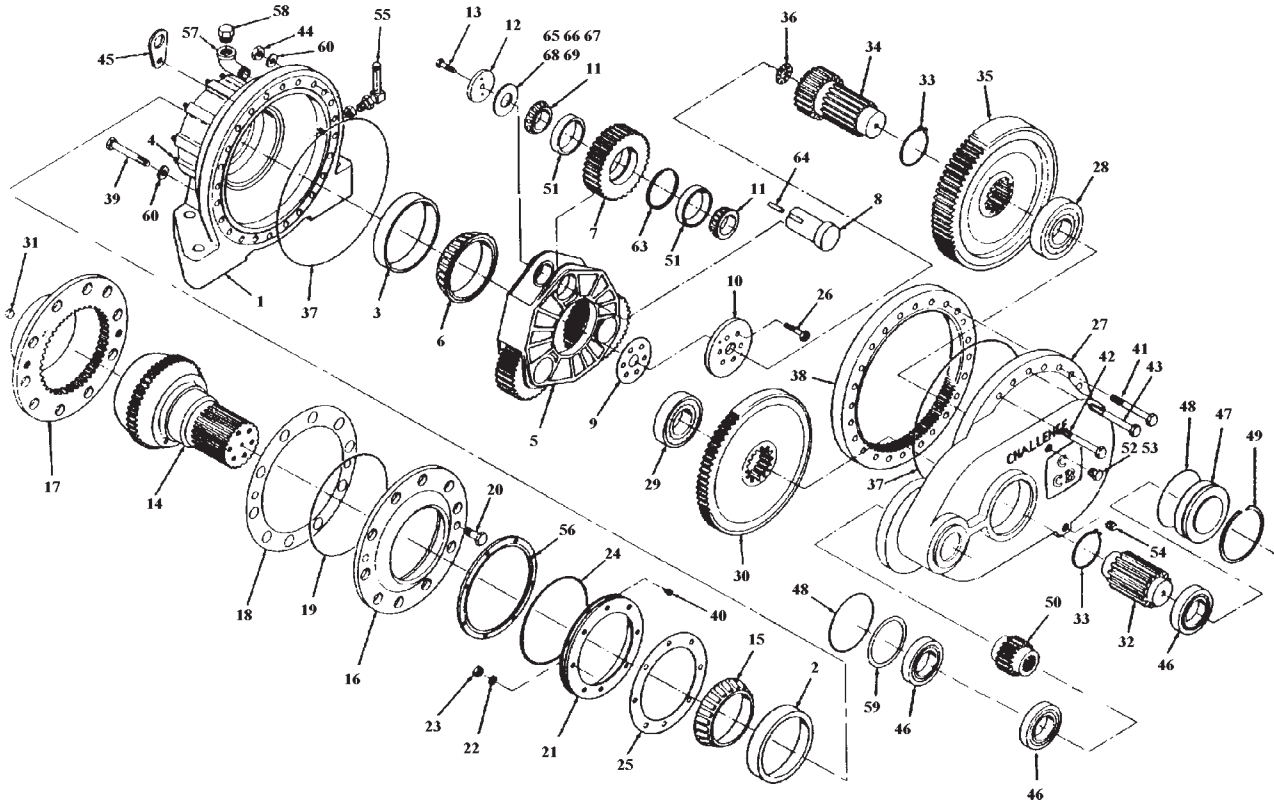


GEARBOXES - SKK & CHALLENGE MODEL 08 (24 BOLT)



GEARBOXES - SKK & CHALLENGE MODEL 08 (24 BOLT)

ITEM	PART #	DESCRIPTION	KIT	QTY	ITEM	PART #	DESCRIPTION	KIT	QTY
	5063026EX	GEARBOX - REBUILT			34	1670538	Sun Gear		1
*	1640320AK	Seal and Shim Kit		1	35	1670539	Driven Gear-Second Stage		1
**	5063026	BK Bearing Kit		1	36	1300489	Bearing	**	1
1	5063003	Housing-Output		1	37	5062150	"O" Ring	*	2
2	1300497	Cup Bearing	**	1	38	1670654	Ring Gear		1
3	1300496	Cup Bearing	**	1	39	1032505	Cap Screw		9
4	5062153	Stud		8	40	1032422	Cap Screw		8
5	5063004	Cage-Planetary		1	41	1032508	Bolt		12
6	1300494	Cone-Bearing	**	1	42	1032507	Bolt		1
7	1670653	Gear-Planet		3	43	1032509	Bolt		2
8	5063007	Shaft-Planet Gear		3	44	1031823	Hex Nut		8
9	4060592	Shim Kit	*	1	45	5062248	Bracket, Lifting		1
10	5062245	Plate-Output Shaft		1	46	1300493	Bearing	**	3
11	1300578	Cone Bearing	**	6	47	5062249	Retainer-Bearing		1
12	5063006	Plate-Planet Gear Shaft		3	48	1690231	"O" Ring	*	2
13	1032522	Cap Screw		3	49	1050982	Retaining Ring		1
14	1670553	Output Shaft		1	50	1670549	Shaft-Input		1
15	1300495	Cone Bearing	**	1	51	1300579	Cup Bearing	**	6
16	1670555	Socket, Front Trunnion		1	52	H-70-568-114	"O" Ring		1
17	1670556	Socket, Rear Trunnion		1	53	1573971	Plug		1
18	4060034	Shim Kit	*	1	54	1574915	Drain Plug		1
19	1690740	"O" Ring	*	1	55	1170261	Sight Gauge		1
20	1032059	Cap Screw		2	56	5062251	Retainer		1
21	5062247	Ring Retainer		1	57	1570526	Elbow		1
2	1050362	Lockwasher		8	58	1690909	Breather		1
23	1030249	Jam Nut		8	59	5062250	Washer-Spacer		1
24	5062903	"O" Ring (Specify 3/8" or 7/16")	*	1	60	1050448	Washer		1
25	4060593	Shim Kit	*	1	61	5070696	Name Plate		1
26	1032057	Hex Head Cap Screw		6	62	1030680	Drive Screw		4
27	5063022	Housing-Input		1	63	1051128	Retaining Ring		6
28	1300492	Bearing	**	1	64	1051186	Dowel Pin		3
29	1300491	Bearing	**	1	65	1691021	Shim-Planet Gear, .002"		2
30	1670540	Driven Gear-First Stage		1	66	1691022	Shim-Planet Gear, .003"		2
31	1573710	Plug		1	67	1691023	Shim-Planet Gear, .005"		2
32	1670551	Shaft-Second Stage		1	68	1691024	Shim-Planet Gear, .010"		2
33	1050177	Snap Ring		2	69	1691025	Shim-Planet Gear, .020"		2